



EVOLVE SOLUTIONS

P30

The P30 is part of Checkpoint Systems' EVOLVE range which allows for connection to remote reporting and remote service. The EVOLVE P30's slim and attractive design provides excellent detection. Advertising panels come as standard for display of brand or promotional information.



Remote connectivity

seamless management reporting

Excellent performance

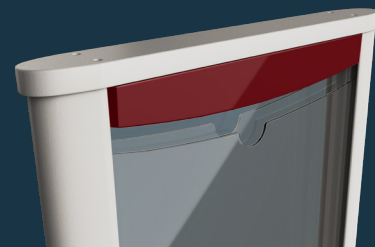
enhanced detection capabilities

Advertising panels

as standard

Jammer detection

alerts stores to the use of EAS jammers



EXCELENT
PERFORMANCE



DATA REPORTING
SERVICES

Part Numbers:

10110784	EVOLVE P30 SSB (white)
10113321	EVOLVE P30 PSB (white)
10037650	EVOLVE P30 SSB (black)
10037648	EVOLVE P30 PSB (black)

Dimensions:

Height: 1,54 m (60.63")
Width: 0,34 m (13.39")
Depth: 0,09 m (3.54")

Aisle width:

Up to 1.8 meters (6')

Frequency:

7.6 to 8.7 MHz